

Tips for Outdoor Play



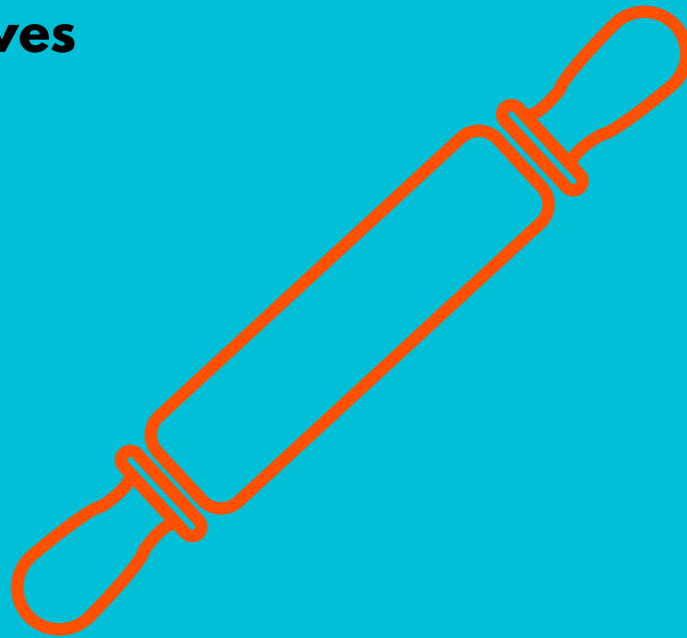
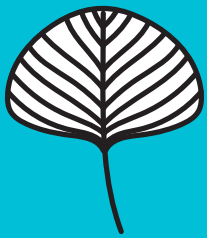
A chance to get crafty with materials you have gathered outdoors! Collecting leaves of different shapes and colours is also a great opportunity to learn about the different types of leaves.





You will need:

- Paper – scraps and sheets to print onto.
- Coloured Pens /Markers
- A rolling pin
- Leaves

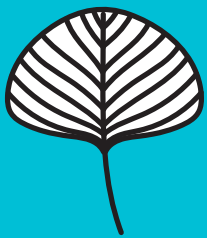




How to guide:



- **First go on adventure in the woods where there will be lots of leaves on the ground to choose from.**
- **Study the different types of leaves- what colours are they, what textures do they have, are they patterned or smooth?**
- **Collect the leaves in a bag to take home!**
- **Check out the Woodland Trust tree and leaf identifier to learn the different names of each leaf:<https://www.woodlands.co.uk/blog/tree-identification/>**





How to guide:

- **Once home lay your leaves out on the table.**
- **First take the leaf and place it face down on a piece scrap of paper. Make sure the underside of the leaf is facing up, with all the veins and texture showing.**
- **Then start colouring in your leaf with your pens/markers-make sure and colour in the whole leaf-right to the edges.**
- **Lay the leaf, coloured side down onto a fresh sheet of paper.**
- **Then carefully use the rolling pin, press down over the leaf as hard as you can-rolling back and forth.**
- **Then simply peel back the leaf to reveal a beautiful print**

